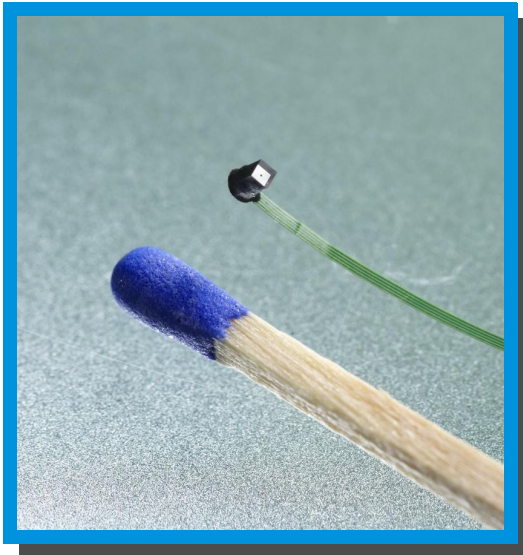


ABS GmbH – Your reliable partner for DSP and FPGA-based high-performance digital camera systems

WK3101 – New version of one of the smallest miniature camera heads worldwide



With an improved sensor and an extended field of view - this tiny camera head is now even more versatile. Whether in medicine, research or industry, if there is the need for **high quality images** combined with **large depth of focus** in very little space, the WK3101 offers the best possible synthesis of **space-saving, high resolution** and a **fast frame rate** – and all of that in the size of a pinhead!

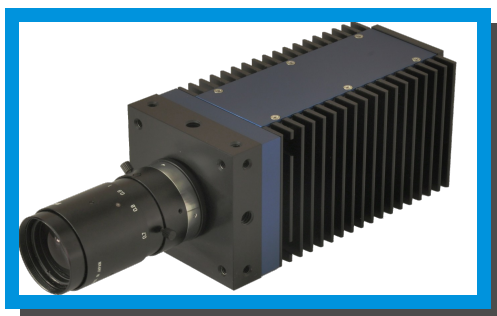
| | |
|----------------|--|
| Sensor | CMOS, Bayer Pattern RGB |
| Dimensions | 1 mm x 1 mm x 1,4 mm (camera head including lens) |
| Resolution | 250 x 250 pixels; 62,5k |
| Depth of focus | 5 mm to 50 mm |
| Frame rate | 44 frames per second |
| Connection | Flex-cable, width 700 µm, thickness 65 µm, length till 2 m |

UK31053 and ABSVIDEOCAPTURE – the affordable industrial slow motion

Using the specially developed software ABSVideoCapture it is possible to capture slow motion videos with the unmodified **USB3.0 serial camera UK31053**. Frame rates of **over 500 frames per second** can be achieved by reducing the image area. Videos are saved in AVI format. Furthermore, the favourable price of the camera system (including the software) finally makes the analysis of dynamic processes **really profitable** (e.g. in high-speed machines).



HK39078 – The HD-SDI HDTV-Camera that thinks along



The intelligent 3 Megapixel HDTV camera HK39078 combines **easy operation** with **high image quality** and modern, **integrated image enhancement**. The image output via HD-SDI can be transmitted up to 200m. Using the synchronization input additional cameras can be operated simultaneously. With a converter the FullHD camera can be connected to a conventional HDMI or DVI connector to a monitor and ensures a **low latency live image** reproduction.